

Presentation to

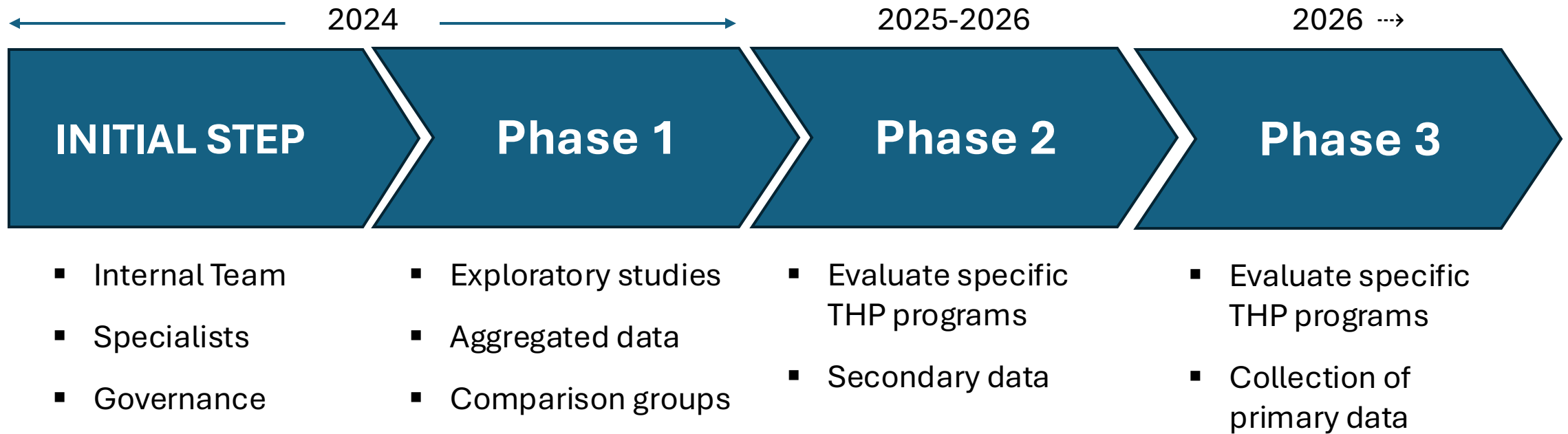
THP NY CHAPTER

Initial analysis about The Human Project / SE – 2024

Developed by  **LEPES** | LABORATÓRIO DE ESTUDOS
E PESQUISAS EM EDUCAÇÃO
E ECONOMIA SOCIAL

Executive summary

IMPACT ASSESSMENT INITIATIVE LAUNCHED IN 2024



TEAM, SPECIALISTS AND GOVERNANCE



The Human Project



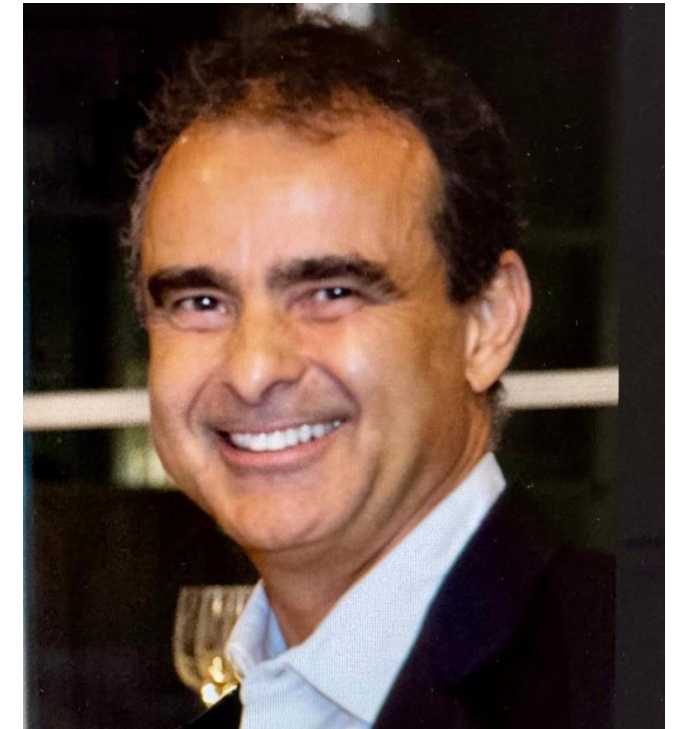
Letícia Mattos
Coordinator for monitoring
and impact assessment

Research and Studies in Education and Social Economy Lab – USP



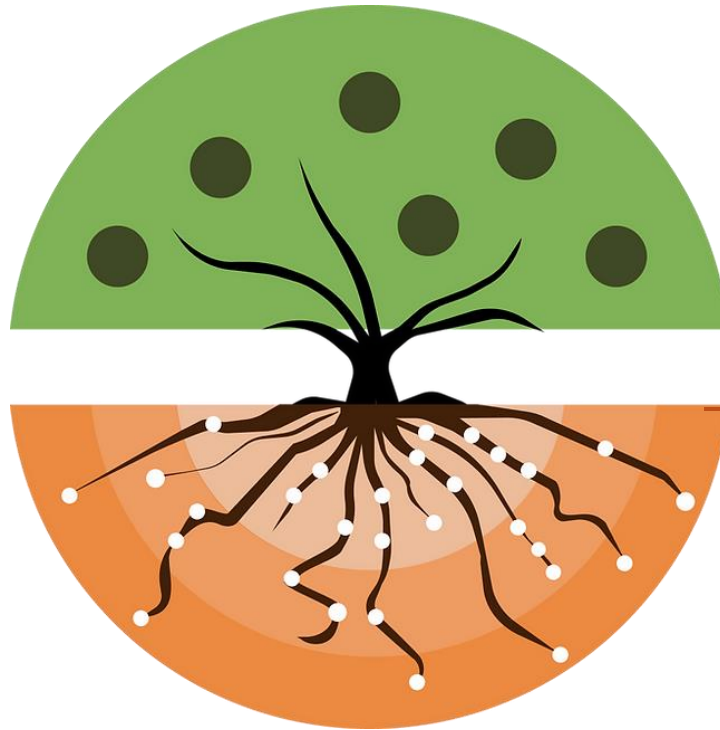
Daniel Santos, PhD
Professor of Economics
The University of São Paulo

Impact Assessment Initiative Steering Committee



Ricardo Rolim Fontes
Chairman of THP NY
Member of the Steering Committee

COMPLEXITY IS CHALLENGING TO MEASURE

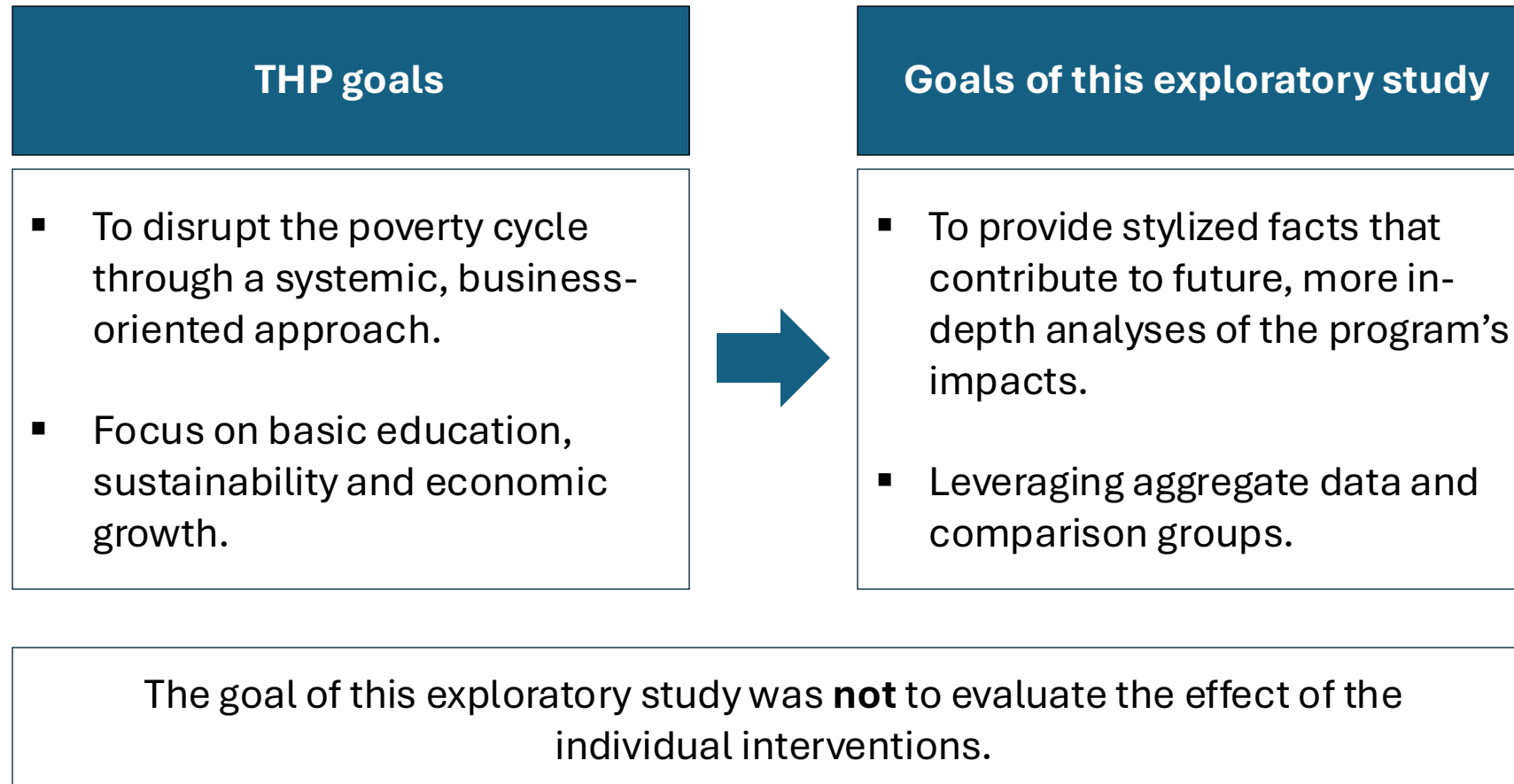


Santa Luzia do Itanhy - SE

- Multiple initiatives and social innovations since 2010
- Systemic nature and organic replication
- Applied to a single specific geographic scope

PHASE 1 OF THE IMPACT ASSESSMENT INITIATIVE

Exploratory study



KEY QUESTIONS TO EXPLORE IN MUNICIPALITY-LEVEL AGGREGATE DATA



Municipality-level aggregate data

1 How have <u>demographics</u> been changing?	<ul style="list-style-type: none">▪ Household census data▪ Human Development Index▪ Living conditions▪ Family development
2 How <u>vulnerable</u> is the population?	<ul style="list-style-type: none">▪ Registry of cash transfers to families in extreme poverty▪ Income generation capacity▪ Public healthcare databases
3 How is the <u>educational</u> system performing?	<ul style="list-style-type: none">▪ Enrollment statistics▪ Teachers' turnover▪ Daycare availability▪ Full-time School programs
4 How is the <u>labor</u> market developing?	<ul style="list-style-type: none">▪ Income, formal jobs, employment tenure▪ Exposure to automation▪ Entrepreneurship, number of companies▪ Survival rate and innovative sectors

Note: Government databases used in the Project: Household Census (IBGE), Unified Registry (MDS), DataSUS (Healthcare), RAIS/CAGED (MTE), Education Census (INEP), Federal Company Registry (Cadastro CNPJ).

Source: LEPES - USP | Initial analysis about The Human Project / SE – 2024

COMPARISON GROUPS TO CONTROL FOR DIFFERENT CHARACTERISTICS



GROUP 1 Santa Luzia do Itanhy	GROUP 2 HDI 16 Municipalities NE	GROUP 3 Demographics 16 Municipalities NE	GROUP 4 THP Municipalities 11 Municipalities NE+N
<ul style="list-style-type: none"> ▪ 20,000 inhabitants ▪ Low HDI (Human Development Index) ▪ High percentage of black residents ▪ High percentage of rural population ▪ No industrialized neighbor municipalities 	<div style="display: flex; flex-direction: column; align-items: center; gap: 10px;"> <input checked="" type="checkbox"/> <input checked="" type="checkbox"/> <input type="checkbox"/> <input type="checkbox"/> <input type="checkbox"/> </div>	<div style="display: flex; flex-direction: column; align-items: center; gap: 10px;"> <input checked="" type="checkbox"/> <input type="checkbox"/> <input checked="" type="checkbox"/> <input checked="" type="checkbox"/> <input type="checkbox"/> </div>	<div style="display: flex; flex-direction: column; align-items: center; gap: 10px;"> <input type="checkbox"/> <input type="checkbox"/> <input type="checkbox"/> <input type="checkbox"/> <input checked="" type="checkbox"/> </div>

COMPARISON GROUPS CHARACTERISTICS



ANO = 2010	Santa Luzia do Itanhy	GROUP 2 HDI	GROUP 3 Demographic	GROUP 4 THP Municipalities
HDI _m	0,545	0,545	0,567	0,602
Population	12.969	13.228	12.878	6.716
Illiteracy rate	33,03%	30,52%	28,74%	28,08%
Years of Schooling (Average)	8,54	8,43	8,12	9,59
Life expectation at birth (Years)	70,82	68,57	70,12	70,47
Per capita Income (R\$/month)	R\$ 194,24	R\$ 218,54	R\$ 254,32	R\$ 260,19

PRELIMINARY FINDINGS POINT TOWARD THP IMPACT ON ENTREPRENEURSHIP



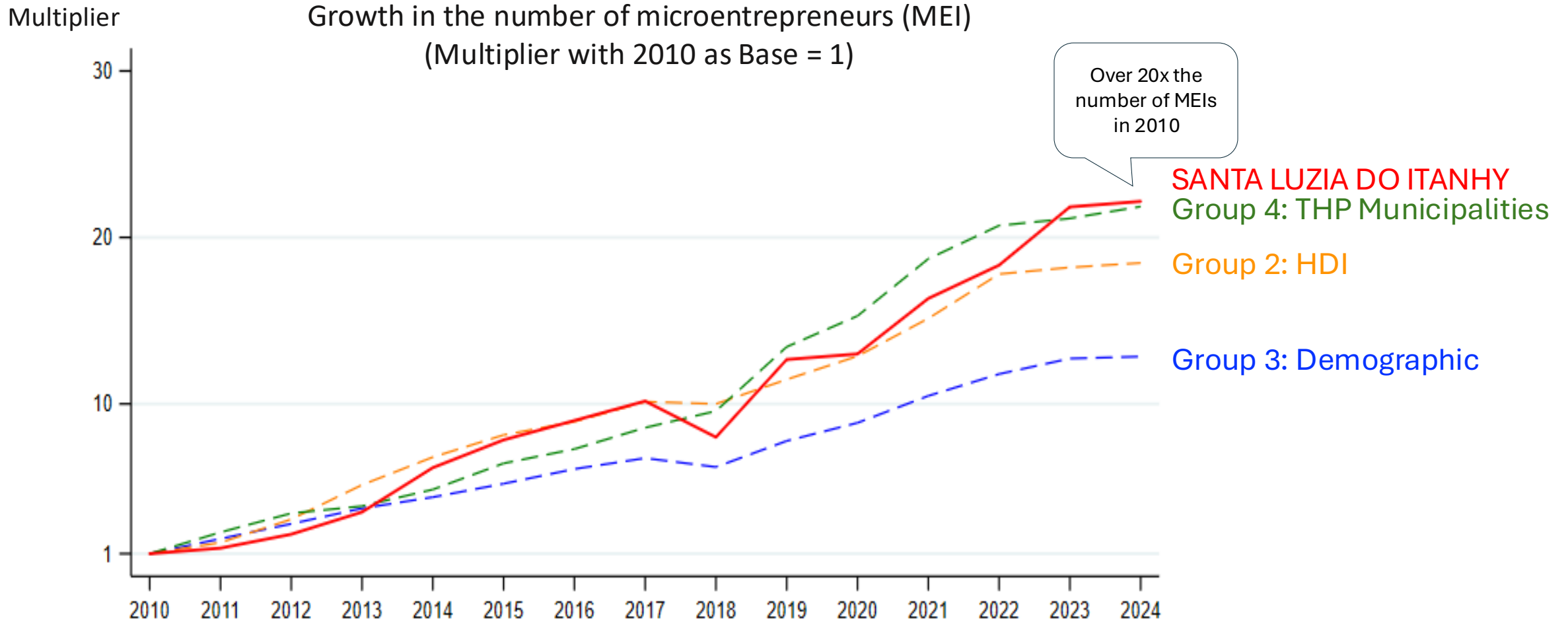
Performance analysis of Santa Luzia do Itanhy relative to peer municipalities:

Entrepreneurship	Wages	Education
<ul style="list-style-type: none">• Entrepreneurship in Santa Luzia was driven by more technology-intensive activities, compared to other groups• But businesses displayed shorter lifespans	<ul style="list-style-type: none">• Santa Luzia shows subtle signs of migration of the workforce to higher-quality and higher-wage salaries• Formal employment income is higher in Santa Luzia in the period	<ul style="list-style-type: none">• Higher enrollment in infant education services• Indication of higher participation of parents in the labor market?• Indication of a new generation with higher potential and better perspectives?

GROWTH OF MICROENTREPRENEURS

Similar growth to municipalities with THP characteristics (Group 4)

PRELIMINARY FINDINGS



GROWTH OF MICROENTREPRENEURS

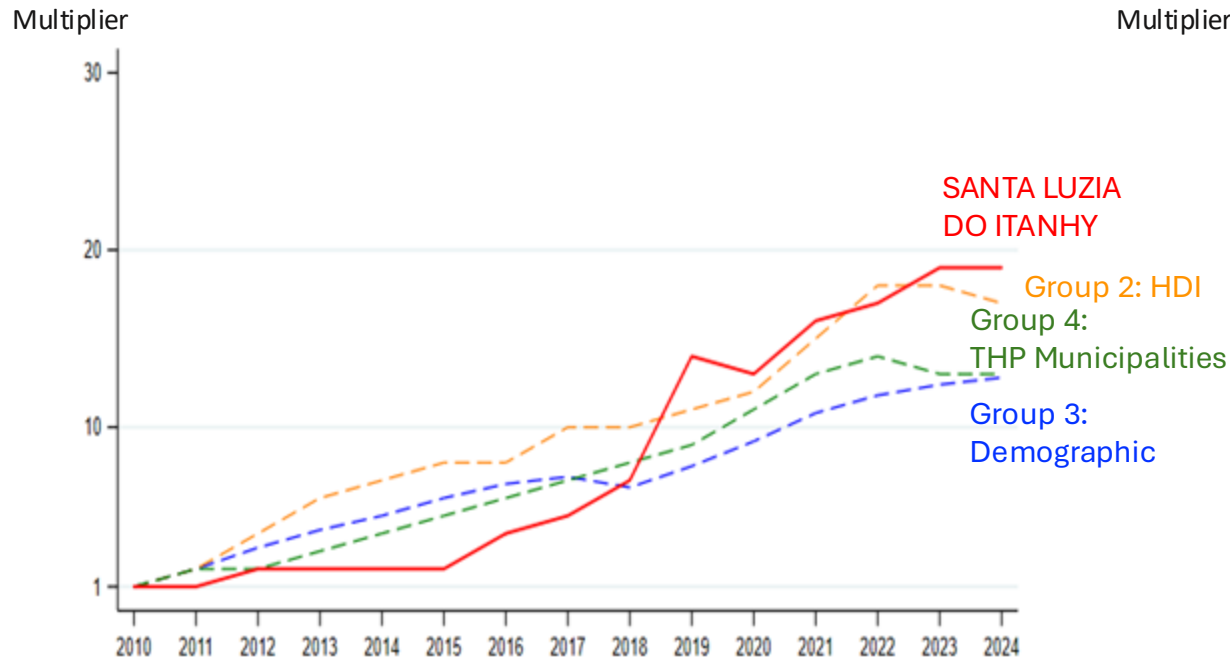
Santa Luzia has stood out in technical and creative sectors despite underperforming in retail, industry and construction

PRELIMINARY FINDINGS

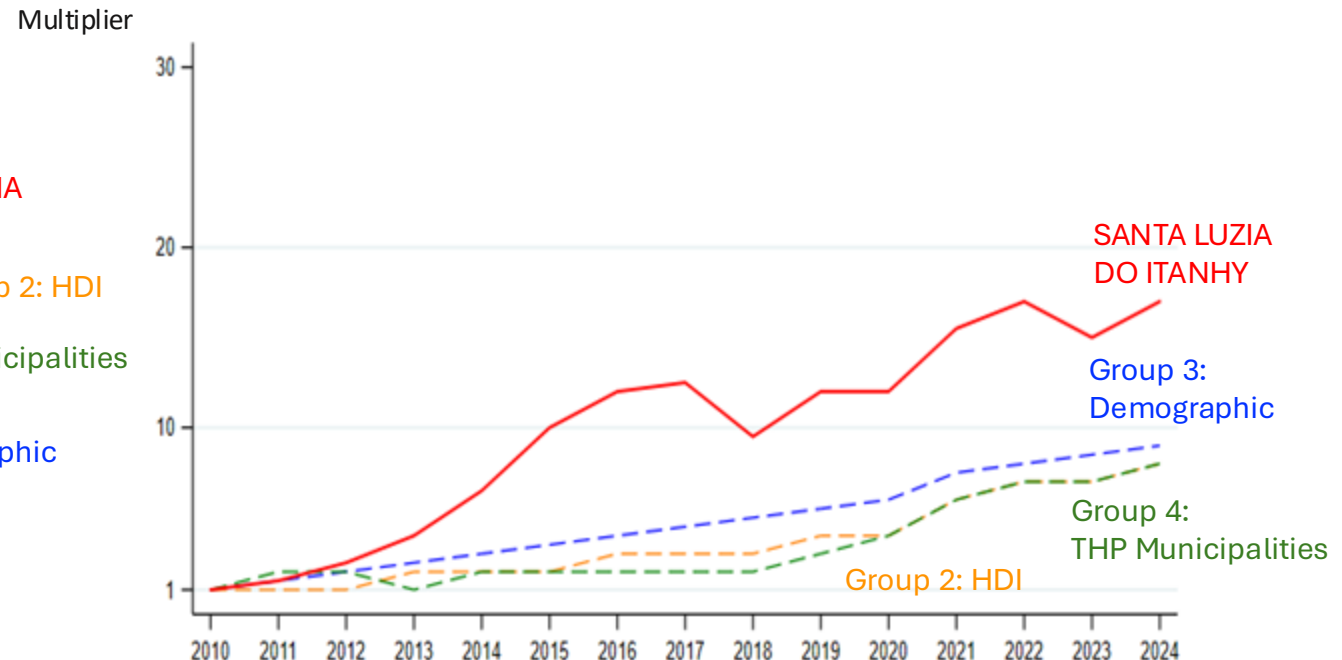


Growth in the number of microentrepreneurs (MEI)
(Multiplier with 2010 as Base = 1)

INFORMATION AND COMMUNICATION MEI

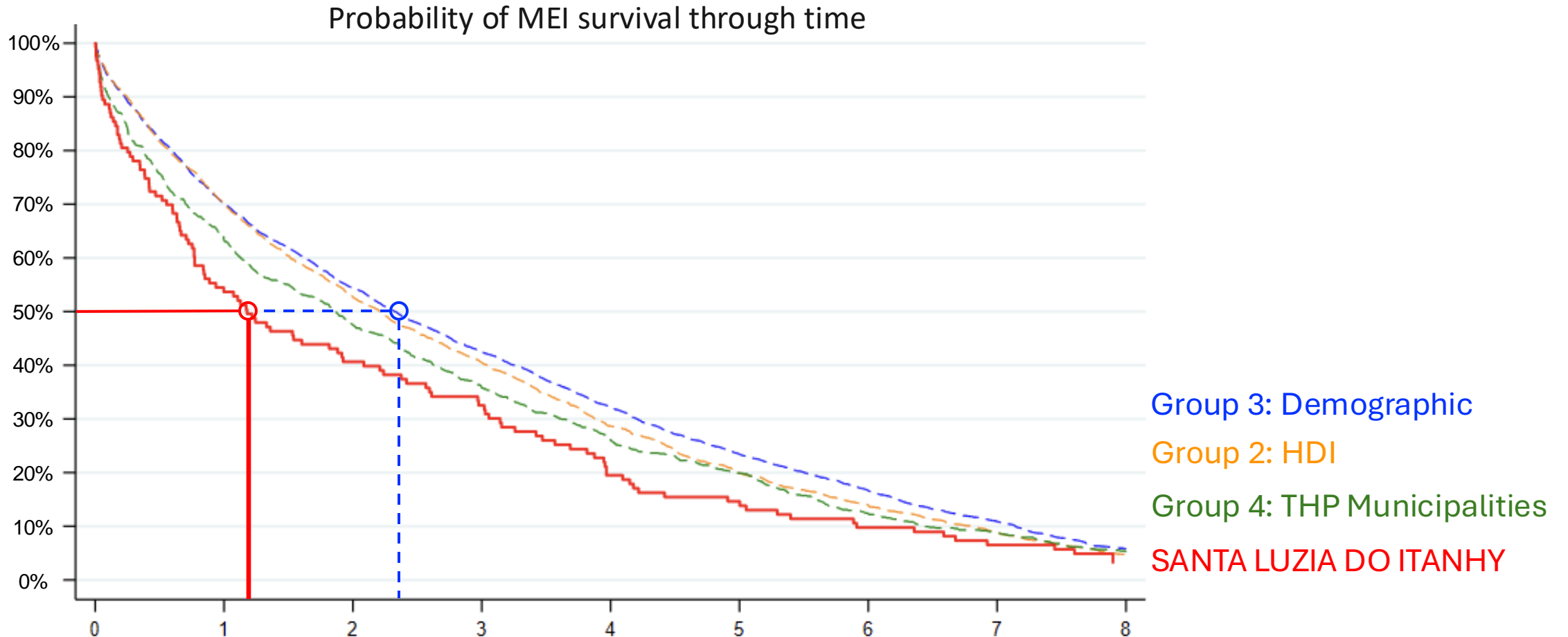


TECHNICAL, FINANCIAL AND ADVERTISING ACTIVITIES MEI



LIFESPAN OF MICRO-BUSINESSES

Santa Luzia's MEIs have lower survival rate in the short-term, but is in line with its comparison groups in the long-term



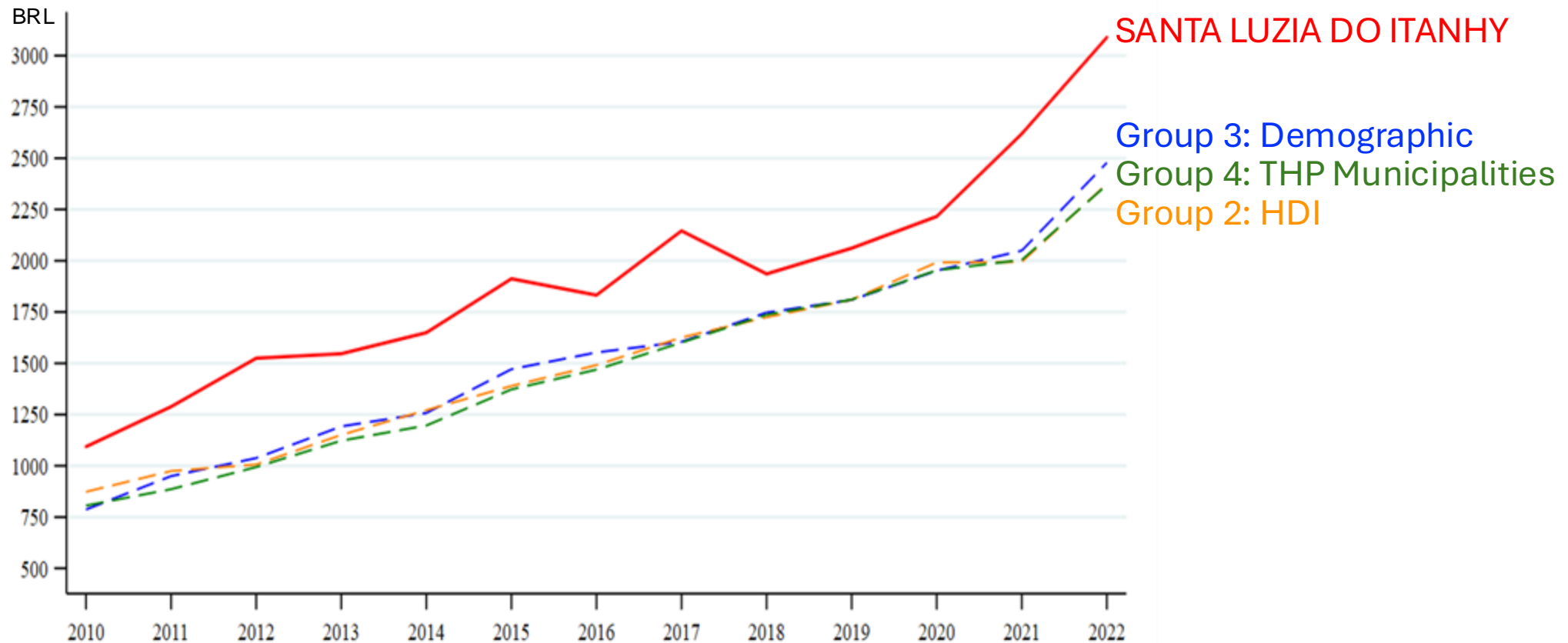
FORMAL EMPLOYMENT INCOME

Has always been higher in Santa Luzia do Itanhy

PRELIMINARY FINDINGS



Average income of people employed in the formal sector



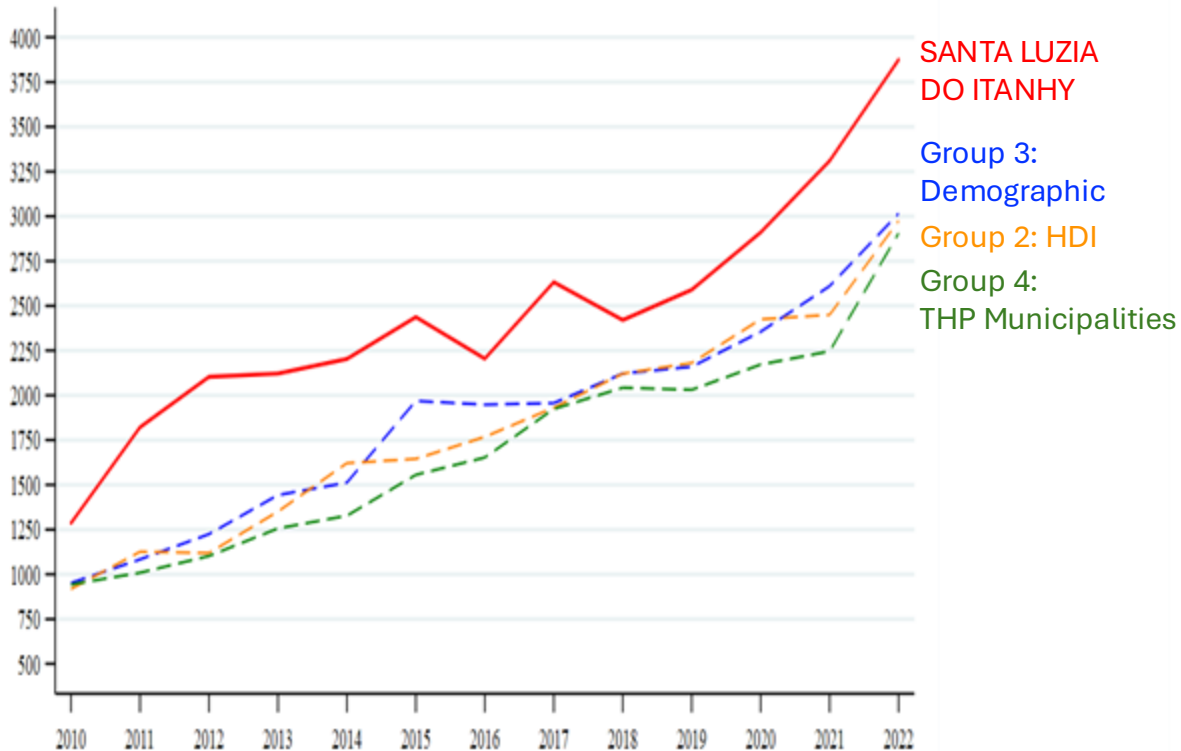
FORMAL EMPLOYMENT INCOME

Santa Luzia's income for occupations with lower propensity to be automated has been consistently higher

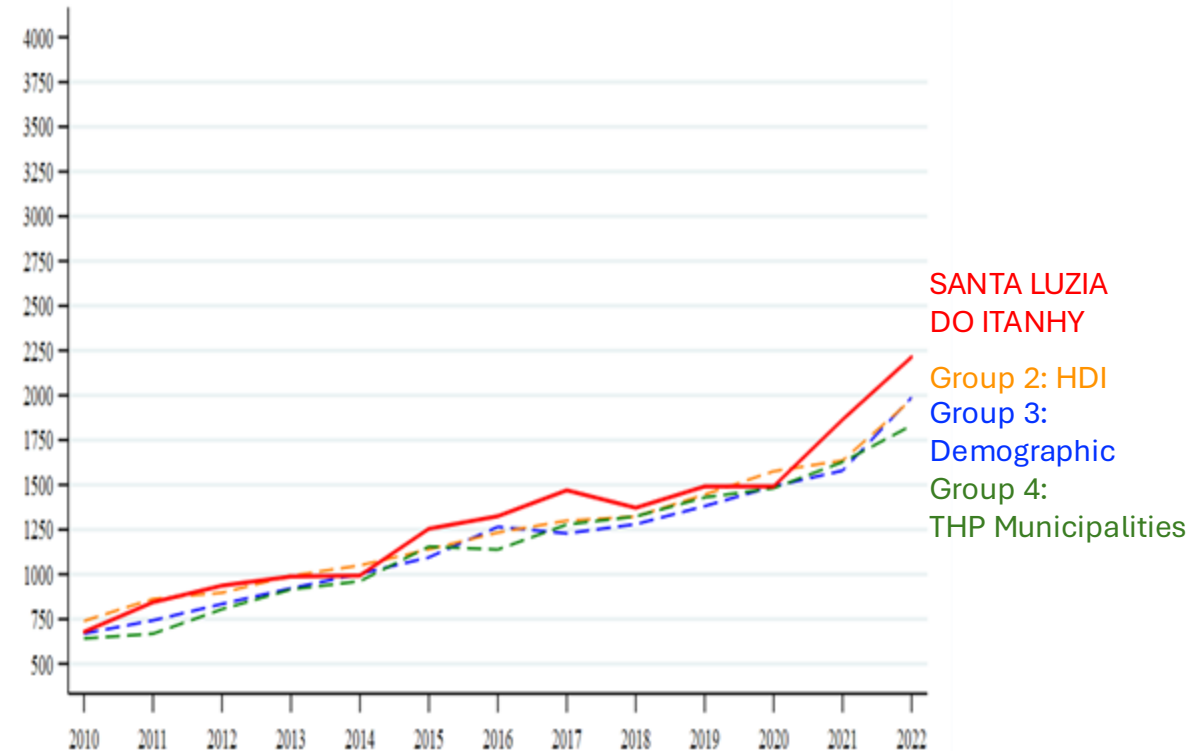


Average income of people employed in the formal sector

Occupations with lower propensity to be automated



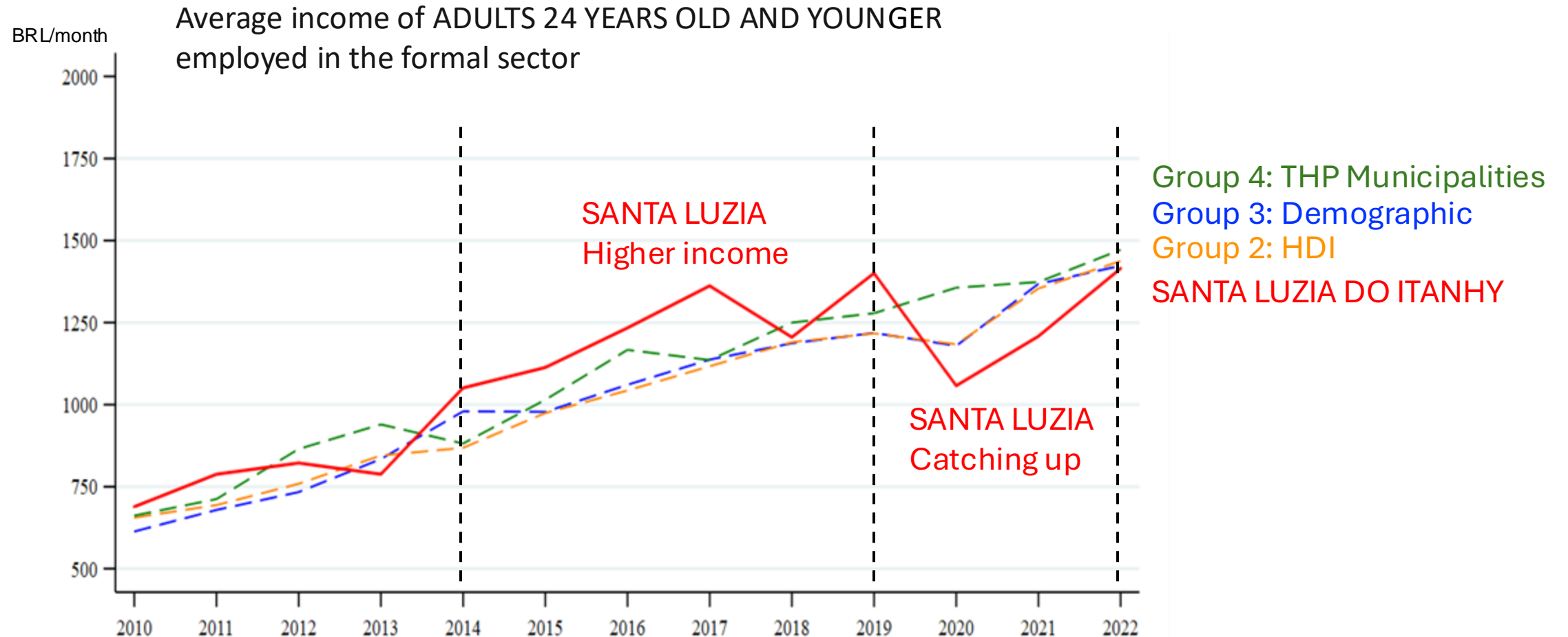
Occupations with high propensity to be automated



FORMAL EMPLOYMENT INCOME

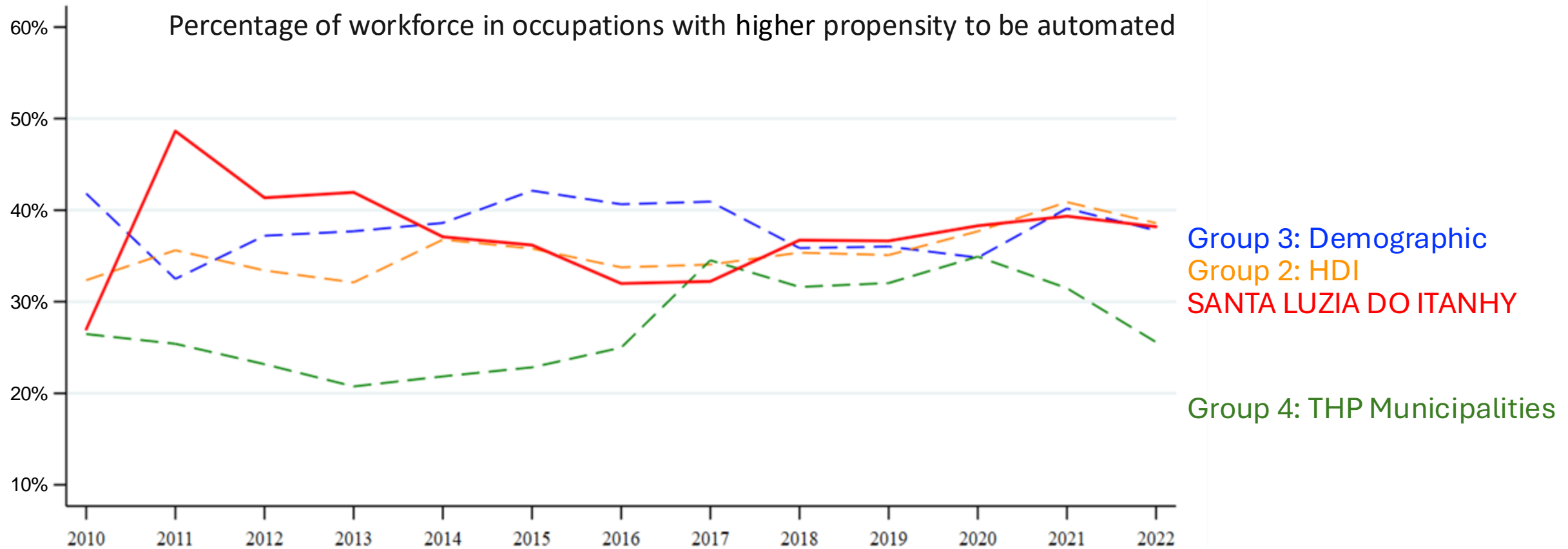
Santa Luzia do Itanhy's Young adults had higher income than in comparison groups before 2014-2019, dropped in 2020 and is catching up now

PRELIMINARY FINDINGS



PERCENTAGE OF NON-ROUTINE JOBS

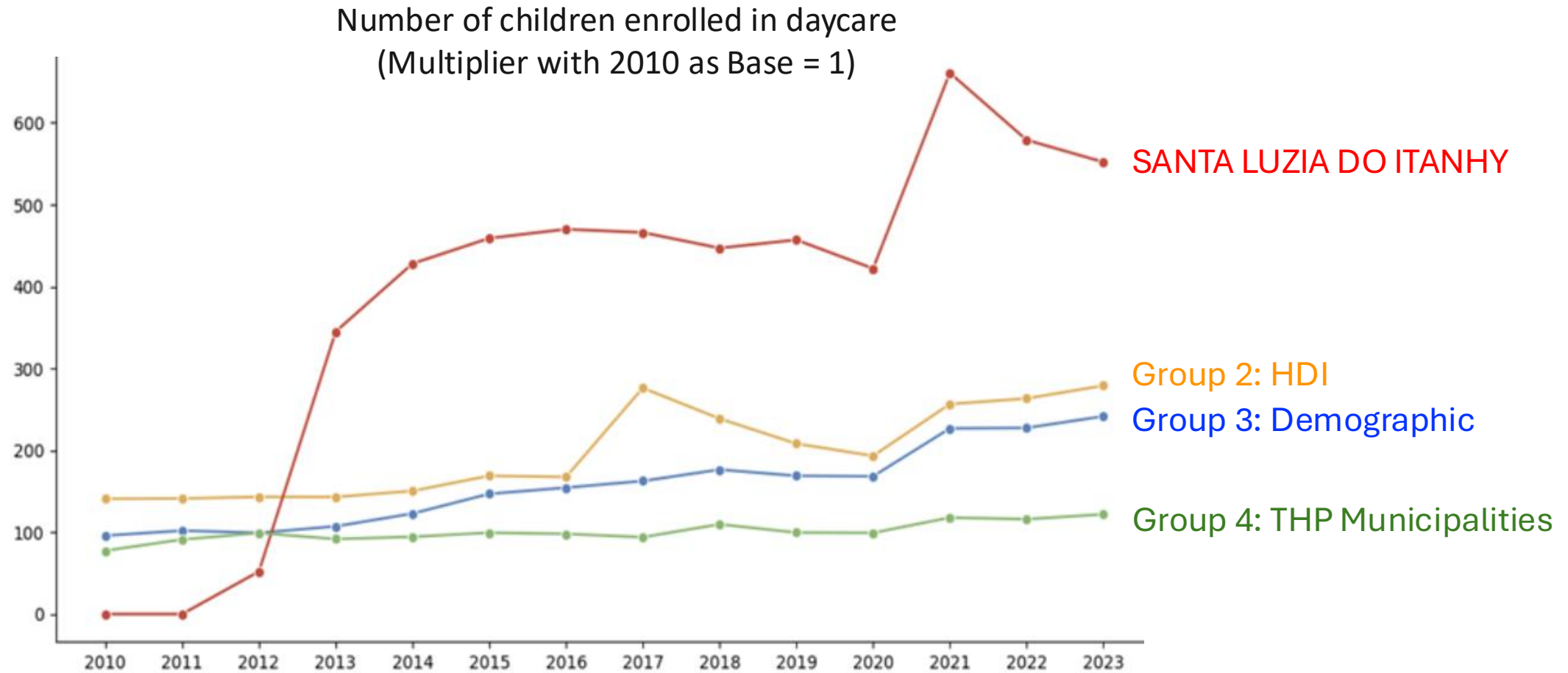
Santa Luzia started below 30% in 2010 and reached almost 40% 2022 while Municipalities in comparison groups are below or at the same level as of 2010



DAYCARE ENROLLMENT

Sharp increase relative to comparison groups

PRELIMINARY FINDINGS



PERFORMANCE IN MATH

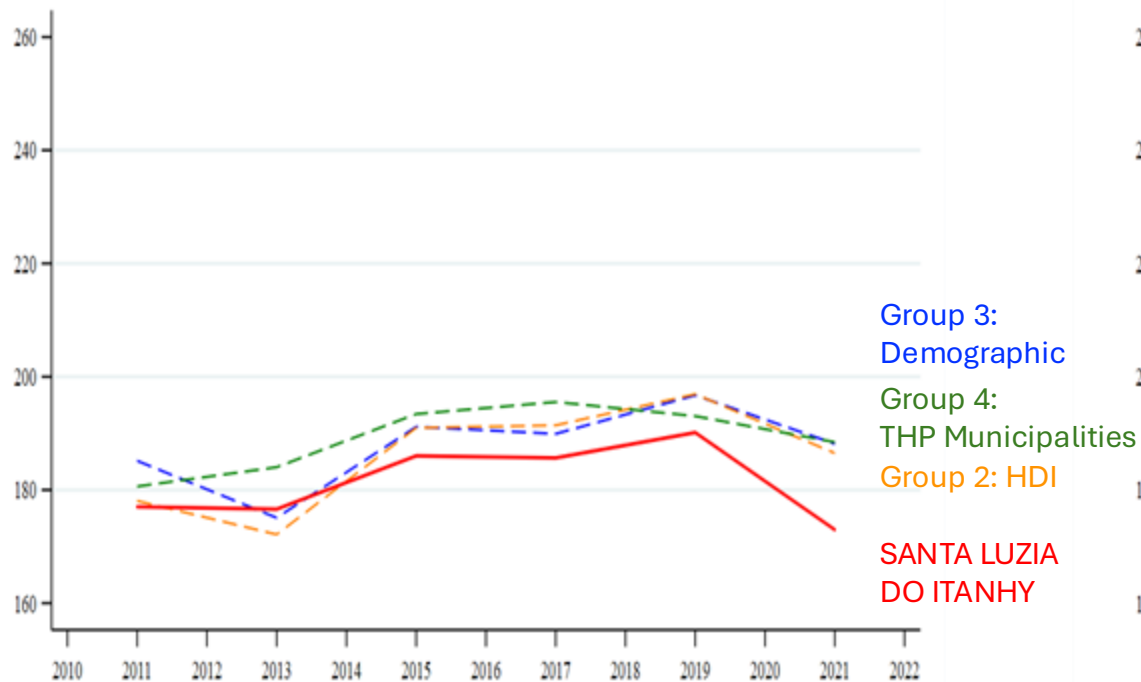
The consistent underperformance in Math are among the topics to be investigated in the next phases of the impact assessment initiative

PRELIMINARY FINDINGS

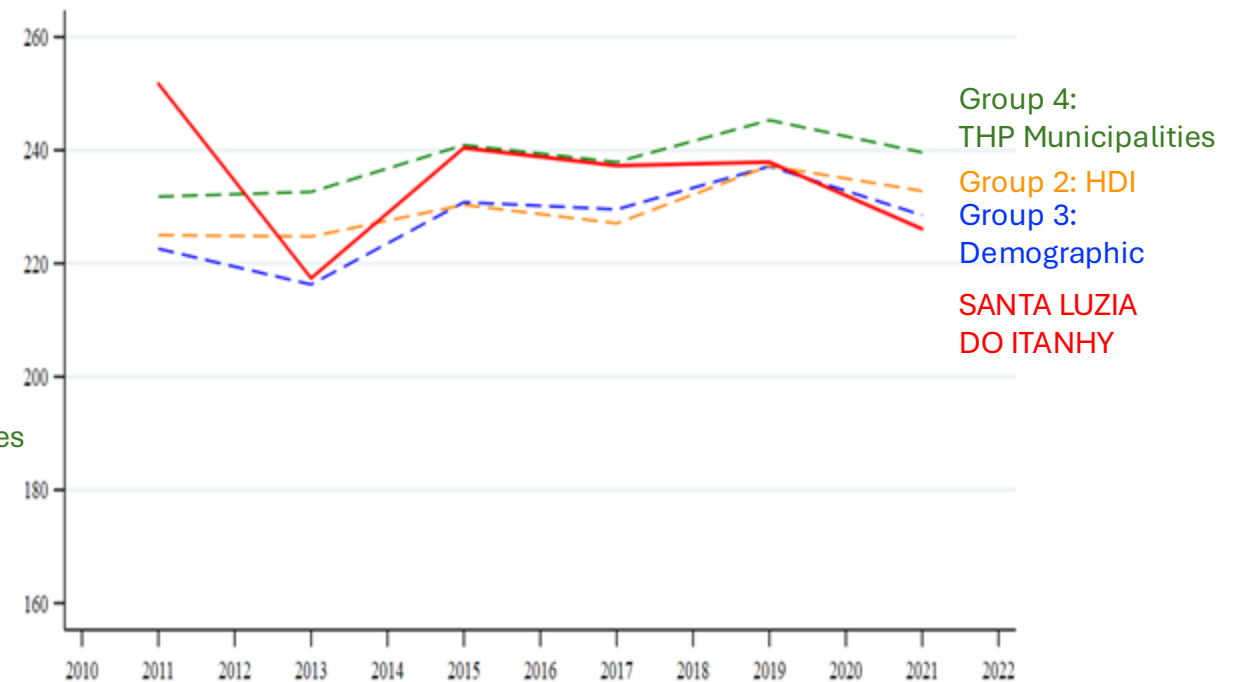


Grades on SAEB (Math)

5th Grade



9th Grade



NEXT STEPS



Limitations of Phase 1 Exploratory Study



Limitations	Reasons	Next steps
Aggregate data may not have fully captured the initial effects of the programs.	Social innovations may not have matured enough to cause structural changes in macro social aspects of Santa Luzia.	Application of a qualitative instrument to evaluate the impact of THP programs on a sample of individual participants.

NEXT STEPS



Evaluation domain of the qualitative instrument

Surroundings perception	Entrepreneurial skills	Interpersonal skills	Mixed skills	Beliefs and perspectives
<p>Investigate how individuals perceive themselves, their strengths, weaknesses, motivations and potential nowadays and before participating in a THP program.</p>	<p>Self-assessment of their entrepreneurial abilities. It seeks to understand how young people view the possibility of entrepreneurship.</p>	<p>Self-assessment of their abilities to relate to other individuals and the contexts between them.</p>	<p>Self-assessment of skills such as assertive and responsible decision-making and the ability to solve problems in an innovative way are skills.</p>	<p>Beliefs cultivated throughout life and how THP and related experiences helped individuals to emancipate themselves from a cycle of vulnerability.</p>
<h3>Guided Interviews</h3>		<ul style="list-style-type: none"> ▪ 40 to 60 minutes ▪ Young program participants 		
<h3>Actions Required</h3>		<ul style="list-style-type: none"> ▪ Train team to conduct interviews ▪ Define sample and conduct interviews 		

THANK YOU!

Presentation to

THP NY CHAPTER

Initial analysis about The Human Project / SE – 2024

Developed by  **LEPES** | LABORATÓRIO DE ESTUDOS
E PESQUISAS EM EDUCAÇÃO
E ECONOMIA SOCIAL

Executive summary